



## PERFORMANCE VERIFICATION STATEMENT for the Chelsea MINI<sup>tracka</sup> IIC fluorometer

---

<b>TECHNOLOGY TYPE:</b>	Fluorometer
<b>APPLICATION:</b>	In situ estimates of chlorophyll concentrations
<b>PARAMETERS EVALUATED:</b>	Response linearity, precision, range, and reliability
<b>TYPE OF EVALUATION:</b>	Laboratory and Field Performance Verification at seven ACT Partner sites
<b>DATE OF EVALUATION:</b>	Testing conducted from May through September 2005
<b>EVALUATION PERSONNEL:</b>	M. Carroll, D. Chigounis, S. Gilbert, K. Gundersen, K. Hayashi, C. Janzen, T. Johengen, T. Koles, F. Laurier, T. McKissack, L. Meadows, C. Metcalfe, C. Robertson, D. Schar, J. Seiter, G.J. Smith, M. Tamburri and D. Wells.

**NOTICE:**

ACT verifications are based on an evaluation of technology performance under specific, agreed-upon protocols, criteria, and quality assurance procedures. ACT and its Partner Institutions do not certify that a technology will always operate as verified and make no expressed or implied guarantee as to the performance of the technology or that a technology will always, or under circumstances other than those used in testing, operate at the levels verified. ACT does not seek to determine regulatory compliance; does not rank technologies nor compare their performance; does not label or list technologies as acceptable or unacceptable; and does not seek to determine “best available technology” in any form. The end user is solely responsible for complying with any and all applicable federal, state, and local requirements.

This document has been peer reviewed by ACT Partner Institutions and a technology-specific advisory committee and was recommended for public release. Mention of trade names or commercial products does not constitute endorsement or recommendation by ACT for use.

Questions and comments should be directed to: Dr. Mario Tamburri  
Alliance for Coastal Technologies  
Chesapeake Biological Laboratory  
PO Box 38 / One Williams Street  
Solomons, Maryland 20688, USA  
Email: [tamburri@cbl.umces.edu](mailto:tamburri@cbl.umces.edu)

**EXECUTIVE SUMMARY:**

Instrument performance verification is necessary so that effective existing technologies can be recognized and so that promising new technologies can become available to support coastal science, resource management, and ocean observing systems. The Alliance for Coastal Technologies (ACT) has therefore completed an evaluation of in situ fluorometers designed for measuring chlorophyll. Chlorophyll measurements are widely used by resource managers and researchers to estimate phytoplankton abundance and distribution. Chlorophyll is also the most important light-capturing molecule for photosynthesis and is an important variable in models of primary production. While there are various techniques available for chlorophyll determinations, in situ fluorescence is widely accepted for its simplicity, sensitivity, versatility, and economical advantages.

As described below in more detail, field tests that compare manufacturer's chlorophyll values to those determined by extractive HPLC analysis were designed only to examine an instrument's ability to track changes in chlorophyll concentrations through time or depth and NOT to determine how well the instrument's values matched those from extractive analysis. The use of fluorometers to determine chlorophyll levels in nature requires local calibration to take into account species composition, physiology and the effect of ambient irradiance, particularly photoquenching.

In this Verification Statement, we present the performance results of the Chelsea Technologies Group MINI<sup>tracka</sup> IIC fluorometer evaluated in the laboratory and under diverse field conditions in both moored and profiling tests. A total of nine different field sites or conditions were used for testing, including tropical coral reef, high turbidity estuary, open-ocean, and freshwater lake environments. Because of the complexity of the tests conducted and the number of variables examined, a concise summary is not possible. We encourage readers to review the entire document (and supporting material found at [www.chelsea.co.uk](http://www.chelsea.co.uk)) for a comprehensive understanding of instrument performance. However, specific subsection of parameters tested for and environments tested in can be more quickly identified using the Table of Contents below.

<b>TABLE OF CONTENTS:</b>	Page No.
Background.....	3
Type of Technology .....	3
Objective and Focus of Performance Verification.....	4
Parameters Evaluated .....	4
Summary of Verification Protocols.....	4
Quality Assurance / Quality Control .....	5
How to Interpret the Results .....	6
Verification Result, Laboratory Tests.....	7
Response Linearity and Detection Range .....	7
Response Precision.....	8
Response Linearity and Fluorochrome Response.....	9
Impact of Phytoplankton, Light, CDOM and Turbidity.....	10
Reliability .....	11
Verification Result, Moored Field Tests.....	12
Patuxent River, Chesapeake Bay, Maryland (estuary).....	14
Muskegon, Lake Michigan (freshwater).....	16
Coconut Island, Hawaii (coral reef).....	18
Damariscotta River Estuary, Gulf of Maine (tidal embayment).....	20
Moss Landing, California (estuary).....	22
Skidaway Island, Georgia (estuary).....	24
Bayboro Harbor, Tampa Bay, Florida (estuary).....	26
Moored Reliability.....	28
Verification Result, Profiling Field Tests .....	29
Gulf of Maine (coastal ocean).....	30
Lake Michigan (freshwater).....	33
Appendix 1, Manufacturer interpretation of results	

**BACKGROUND:**

Instrument performance verification is necessary so that effective existing technologies can be recognized and so that promising new technologies can become available to support coastal science, resource management, and ocean observing systems. To this end, the NOAA-funded Alliance for Coastal Technologies (ACT) serves as an unbiased, third party testbed for evaluating sensors and sensor platforms for use in coastal environments. ACT also serves as a comprehensive data and information clearinghouse on coastal technologies and a forum for capacity building through workshops on specific technology topics (for more information visit [www.act-us.info](http://www.act-us.info)).

This document summarizes the procedures used and results of an ACT Evaluation to verify manufacturer claims regarding the performance of the Chelsea Technologies Group MINI<sup>tracka</sup> IIC fluorometer. Detailed protocols, including QA/QC methods, are described in the *Protocols for the ACT Verification of In Situ Fluorometers* (ACT TV05-01), which can be downloaded from the ACT website ([www.act-us.info/evaluation\\_reports.php](http://www.act-us.info/evaluation_reports.php)). Appendix 1 is an interpretation of the Performance Verification results from the manufacturer's point of view.

**TECHNOLOGY TYPE:**

Chlorophyll measurements are widely used by resource managers and researchers to estimate phytoplankton abundance and distribution and can be used as a tool in assessing eutrophication status. Chlorophyll is also the most important light-capturing molecule for photosynthesis and is an important variable in models of primary production. These data are used for numerous industrial applications as well, including water quality management, water treatment, ecosystem health studies, and aquaculture. There are various techniques available for chlorophyll determinations, including spectrophotometry, bench-top fluorometry and high performance liquid chromatography (HPLC) using samples collected on filters and extracted in solvent. However, chlorophyll measurement by in situ fluorescence is widely accepted for its simplicity, sensitivity, versatility, and economical advantages.

In situ fluorometers are designed to detect chlorophyll *a* in living algal and cyanobacterial cells in aquatic environments. The excitation light from the fluorometer passes through the water and excites photosynthetic pigments, including chlorophyll within the living cells of the algae present. A small fraction of this absorbed light is re-emitted by chlorophyll *a* as red fluorescence. As light absorption by chlorophyll and its accessory pigments and the fate of absorbed photons are biophysical events driving photosynthesis that are under physiological control, several factors make in situ fluorescence monitoring of chlorophyll, a semi-quantitative measure at best. Environmental conditions, phytoplankton community composition, physiological status, cell morphology and irradiance history all play a role in altering the relationship between fluorescence and the concentrations of chlorophyll *a*. Also interfering materials such as other plant pigments, degradation products and dissolved organic matter, can compete with light absorption or change the optical path of fluoresced light. Even with these diverse natural constraints, in situ fluorescence in a variety of deployment modes does supply valuable information on the relative temporal and/or spatial distribution of chlorophyll concentrations in the water column and under similar conditions correlates well with extracted chlorophyll *a* samples.

The MINI<sup>tracka</sup> uses a single high intensity blue LED light source, surface mount electronics and an Acetyl "C" pressure housing. The excitation wavelength is 470 nm and the emission wavelength is 685 nm. It is compact, with low power consumption, and the stability of the LED light source provides a long re-calibration interval. Particular design attention has been paid to the rejection of ambient daylight. The cowl design of the UV AQUA<sup>tracka</sup> has been incorporated as an integral feature of the MINI<sup>tracka</sup> pressure housing, removing the need to pump sea water through a dark chamber. Hence, when using MINI<sup>tracka</sup>, no water flow corrections are needed for subsequent calculations. The manufacturer's published performance specifications for the MINI<sup>tracka</sup> fluorometer include: Range 0.03 to 100  $\mu\text{g L}^{-1}$ , Resolution of  $\pm 0.01 \mu\text{g L}^{-1}$ , and Operating Depth of 0 to 600 meters. More information can be found at [www.chelsea.co.uk](http://www.chelsea.co.uk).

**APPLICATION - OBJECTIVES AND FOCUS OF PERFORMANCE VERIFICATION:**

The basic application and parameters evaluated were determined by surveying users of in situ fluorometers. Almost equal numbers of respondents to our needs and use assessment indicated in situ fluorometers were commonly deployed on remote platforms in estuarine and near shore environments and used in profiling applications, typically down to at least 100 meters depth. Therefore, this performance verification focused on these two applications. It was also clear from the user survey that accuracy, precision, range (i.e., detection limits), and reliability are the most important parameters guiding instrument selection decisions. Given that in vivo or in situ fluorometry is a relative measurement with no absolute “true value” reference (see discussion above), accuracy in the measurement of chlorophyll in vivo cannot be determined directly. Much of the variation in fluorescence as a measure of chlorophyll is due to physiological and taxonomic factors that have nothing to do with any particular instrument. Therefore, a surrogate for accuracy was used in this Performance Verification; response linearity or stability of the response/calibration factor to a defined reference (see below). Protocols were developed with the aid of manufacturers and Technical Advisory Committee to evaluate these specific areas.

**PARAMETERS EVALUATED:**

Definitions below were agreed upon with the manufacturer as part of the verification protocols.

**Response Linearity** – Stability of a predetermined response or calibration factor, computed as: (fluorometer measurement in sample solution – fluorometer measurement in blank solution) / [reference standard] over a range of reference standard concentrations. As relative fluorescence is temperature dependent, response factors were quantified in the laboratory for each test temperature and the influence of reference dye and algal concentrations, varying standard turbidity concentrations, and light conditions were assessed.

**Precision** – Precision is a measure of the repeatability of a measurement. Instrument precision was determined by calculating the coefficient of variation (STD/Mean x 100) of replicate fluorometer measurements at 3 different reference dye concentrations and a fixed temperature in the laboratory.

**Range** – Range or detection limit is a measure of the minimum and maximum concentration of specific reference dyes and in vivo chlorophyll *a* the instrument can accurately (see definition above) measure. Range and linearity were determined on a dilution series of dye and algal concentrations in water under total darkness.

**Reliability** – Reliability is the ability to maintain integrity or stability of the instrument and data collections over time. Reliability of instruments was determined in two ways. In both laboratory and field tests, comparisons were made of the percent of data recovered versus percent of data expected. In field tests, instrument stability was determined by pre- and post-measures of blanks and reference dyes to quantify drift during deployment periods. Comments on the physical condition of the instruments (e.g., physical damage, flooding, corrosion, battery failure, etc.) were also recorded.

**TYPE OF EVALUATIONS - SUMMARY OF VERIFICATION PROTOCOLS:**

In conference with the participating instrument manufacturers and the Technical Advisory Committee, it was determined that the verification protocols would: (A) employ reference dyes and extractive chlorophyll *a* analysis through HPLC as the standards of reference for determining instrument performance characteristics; (B) include controlled laboratory tests; and (C) include field tests to evaluate performance under a variety of environmental conditions.

The HPLC method used for chlorophyll analysis follows that of Zapata et al. (2000, MEPS 195:29-45). Analyses were conducted by the laboratory of Dr. Nick Welschmeyer at Moss Landing Marine Laboratories (MLML, the West Coast ACT Partner Institution). All samples from Partner sites were frozen in liquid N<sub>2</sub> and shipped by overnight courier in liquid N<sub>2</sub> dry shippers to MLML. Frozen samples were logged in by ACT staff upon receipt and stored in liquid N<sub>2</sub> dewars along with the MLML samples. Samples were then extracted by physical grinding and in N<sub>2</sub>-purged 90% acetone overnight, followed by autosampler HPLC processing commencing the following day. Extracts were simultaneously

analyzed by a standard fluorometric technique (Welschmeyer 1994, L&O 39: 1985-1992) to complement HPLC assays described above.

All laboratory tests of response linearity, precision, range, and reliability were also conducted at MLML in well-mixed (submersible circulating pumps), temperature controlled water baths. As the goal of the laboratory tests was to assess performance of the fluorescence detection systems rather than biologically based variation in chlorophyll fluorescence, an inert fluorochrome was employed as the reference standard. Basic Blue 3 (BB3, C.I. 51004, CAS 33203-82-6, M.W. 359.9) was selected as the primary fluorometric reference standard (Kopf and Heinze 1984 *Anal. Chem.* 56, 1931-1935). BB3 is readily soluble in both deionized and sea-water ( $>>1 \text{ mg}\cdot\text{mL}^{-1}$  or  $> 2.8 \text{ mM}$ ) without substantial shifts in absorbance properties ( $\lambda_{\text{max}} = 654$ ,  $\epsilon_{\text{M},654} = 88954$ ,  $\lambda_{\text{em}} = 661 \text{ nm}$ ). At the request of the participating manufactures and on recommendation of the scientific advisory panel, the dye Rhodamine WT (RWT,  $\lambda_{\text{max}} = 497$ ,  $\lambda_{\text{em}} = 523 \text{ nm}$ ) was also used in a limited number of independent test conditions to permit cross calibration of BB3 and RWT fluorescence signals. Instrument output was first “calibrated” to BB3 and/or RWT concentration under standard reference conditions by immersion in one or two-point standardization solutions as suggested by each manufacturer.

Moored field tests were conducted by seven ACT Partner Institutes at a fixed depth of 1 m from secure deployment sites representing a range of environmental conditions, representative of the range of coastal environments in North America. Field sites included the Chesapeake Biological Laboratory (Solomons, University of Maryland), NOAA/GLERL Lake Michigan Field Station (Muskegon, Michigan, CILER/University of Michigan), Darling Marine Center (Walpole, Maine, GoMOOS/University of Maine), Moss Landing Harbor (Moss Landing, California, MLML), western shore of Skidaway Island (Skidaway, Georgia, SkIO), Kaneohe Bay Barrier Reef (Kaneohe Bay, Hawaii, University of Hawaii), and Bayboro Harbor (Tampa Bay, Florida, University of South Florida). Similar profiling tests were conducted at two sites, CILER/University of Michigan and GoMOOS/University of Maine.

The Chelsea Technologies Group MINI<sup>tracka</sup> IIC fluorometers tested, both in the laboratory and in the field, did not include a biofouling prevention system and were plugged into a Campbell datalogger for data recording and power. A total of four fluorometers were evaluated and all instruments were reconditioned by the manufacturer prior to the second set of deployments at the remaining ACT Partner test sites.

For moored tests, instruments were programmed to record data every 15 minutes and both prior to and after deployment, a series of blanks (DI water) and dyes (BB3 and RWT) were presented to the instruments at the field sites as baseline references. Water samples for HPLC chlorophyll analysis were collected (at the same depth and as close as possible to the sensor heads) at least twice a day, Mondays through Fridays during the four-week field test at the time instruments were programmed to sample. In conjunction with each water sample collection, site-specific conditions were also noted (e.g., date, time, weather conditions, natural or anthropogenic disturbances, and tidal state). Identical methods were used for profiling test with the instrument programmed to record at one second intervals and water sample collected at varying depths.

**\* Detailed fluorometer performance verification protocols can be downloaded at:  
[www.act-us.info/evaluation\\_reports.php](http://www.act-us.info/evaluation_reports.php)**

**Quality Assurance/Quality Control** – This performance verification was implemented according to the test/QA plans and technical documents prepared during planning of the verification test. Prescribed procedures and a sequence for the work were defined during the planning stages, and work performed followed those procedures and sequence. Technical procedures included methods to assure proper handling and care of test instruments, samples, and data. Performance evaluation, technical system, and data quality audits were performed by QA personnel independent of direct responsibility for the verification test. All implementation activities were documented and are traceable to the test/QA plan and to test personnel.

The main component to the QA plan included technical systems audits (TSA), conducted by ACT Quality Assurance Specialists at four of the ACT Partner test sites selected at random (MLML; CILER/University of Michigan, SkIO, and University of Hawaii). These audits were designed to ensure that the verification test was performed in accordance with the test protocols and the ACT *Quality Assurance Guidelines*. (e.g., reviews of sample collection, analysis and other test procedures to those specified in the test protocols, and data acquisition and handling). During the verification tests, no deviations from the test protocols were necessary.

The environmental samples used for determination of total chlorophyll *a* content by HPLC analysis were subject to several levels of quality assurance control. First, addition of the internal standard (trans-beta-8-carotenal; Fluka) to the 90% acetone extracts was used to control for variation in injection volume and potential sample dilution/evaporation during tissue-grinding extraction. Second, HPLC chromatograms were visually inspected to ensure accuracy of peak and baseline calls and corrected as needed. Third, as an independent check on the accuracy of the HPLC chlorophyll *a* estimates, roughly two-thirds of the samples were selected from each field site and the extracts assayed on calibrated lab-bench fluorometers using standard protocols (single-step fluorometry: Welschmeyer, 1994 and acidification fluorometry: Yentsch et al. 1965).

Sample discrepancies (>50% difference in estimate) identified by direct comparison of chlorophyll *a* estimates obtained by these independent methods were re-evaluated for accuracy by checks of the original chromatogram calls, spreadsheet entries and if necessary re-injection of the sample under consideration. When standardized against pure chlorophyll *a* in 90% acetone, the simple fluorometric assays inherently overestimate chlorophyll *a* in natural samples because of additional fluorescent compounds contained in the natural pigment matrix; this overestimate is typically ca. 10%, but can be greater when large portions of chl b, chl c1, chl c2, chl3 and pheopigments are present in natural samples.

#### **HOW TO INTERPRET THE RESULTS:**

As described above, fluorometers are sensors designed to detect the fluorescent energy emitted by certain molecules of interest, such as chlorophyll. When working with pure analyte solutions, the fluorescence value measured by an in situ fluorometer is typically proportional to the concentration of the molecules present. The laboratory tests therefore focused on instrument parameters such as response linearity to dye solutions under varying concentrations and conditions. However, the relationship between fluorescence and the concentration of chlorophyll *a* in living cells is strongly influenced by many biophysical and physiological factors. For example, chlorophyll fluorescence in vivo is a function of light absorbed by all photosynthetic pigments in the targeted sample, whereas in an extract, it is only the light absorbed by chlorophyll molecules. This makes fluorescence of chlorophyll in an extract a poor proxy of chlorophyll fluorescence in vivo. Field tests, which compare fluorometer values to those determined by extractive HPLC analysis, were therefore designed only to examine the instrument's ability to reliably track changes in chlorophyll concentrations through time or depth and NOT to determine how well the instrument's values match those from extractive analysis. Ancillary water quality measures taken during the field trials (CDOM and TSS) might be used to help assess the underlying cause (optical path interference versus instrument electronic noise or phytoplankton, physiology) of any deviations between measured fluorescence and extracted chlorophyll.

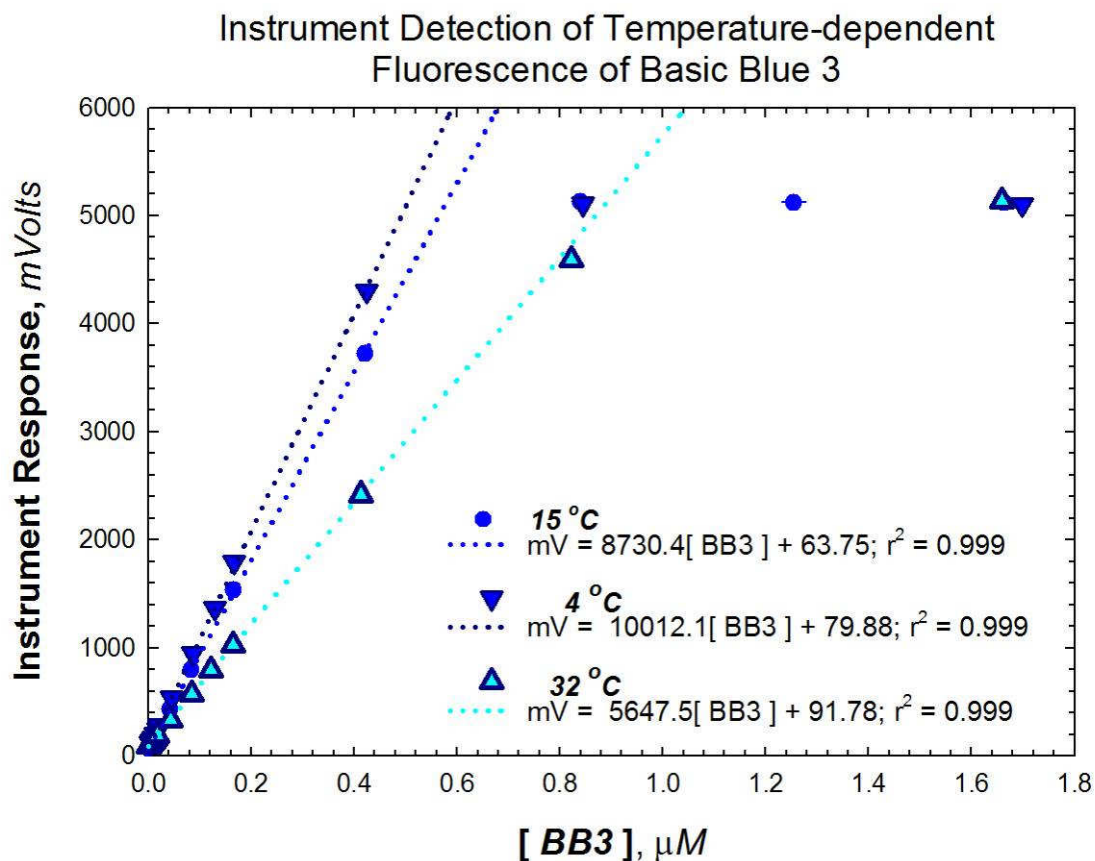
**\* Data is presented as relative fluorescence units (RFU) as reported by the instrument. For additional corrections, interpretation and analysis of results, please visit [www.chelsea.co.uk](http://www.chelsea.co.uk).**

### SUMMARY OF VERIFICATION RESULTS, LABORATORY TESTS:

Because of the inherent limitations of in situ fluorometry and the inability to control various factors that can impact the data during field tests; response linearity, precision and range were determined in the laboratory only.

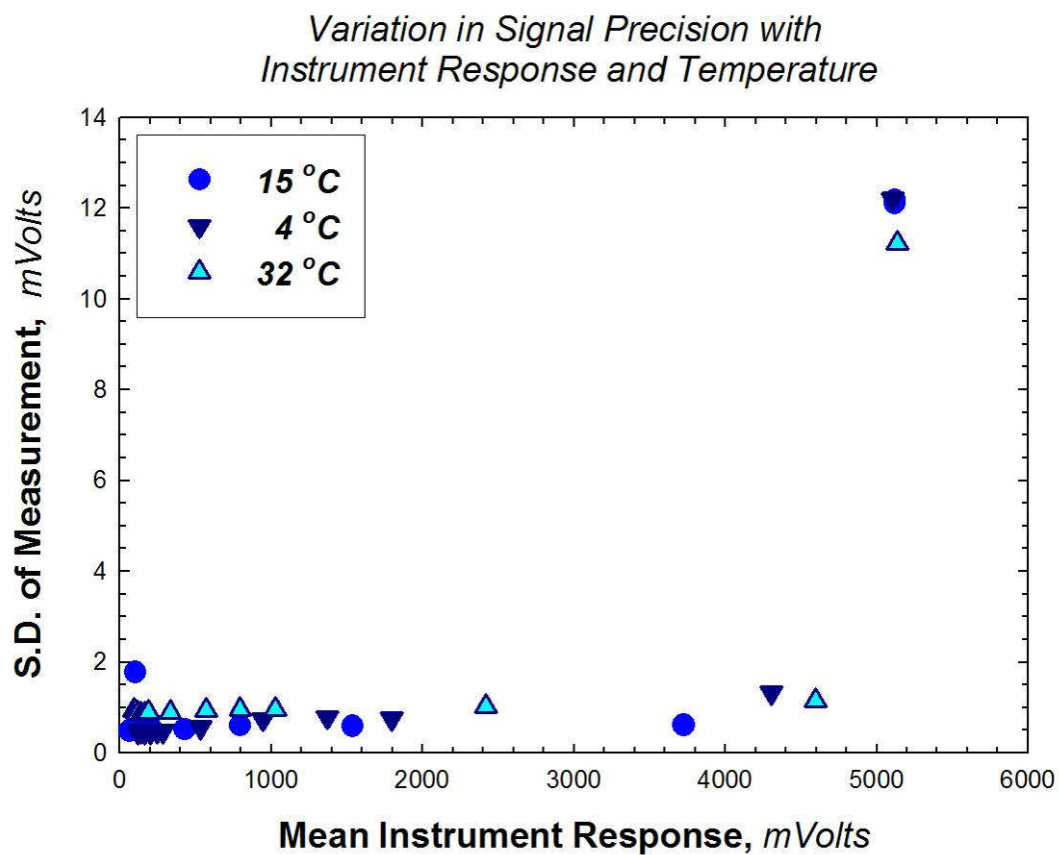
#### Response Linearity and Detection Range

**Figure 1:** Instruments were equilibrated in temperature regulated water baths and programmed to sample at 1 minute intervals while exposed to sequential increases in BB3 concentrations. The MINI<sup>tracka</sup> fluorometer output was highly linear through a BB3 concentration of 0.5  $\mu\text{M}$  and detector response saturated at higher concentrations with a maximum signal of ca. 5100 mV. The average instrument response in dye-free water was  $78.47 \pm 0.62$  mV, indicating a limit of detection at 3 s.d. of 1.87 mV above the baseline reading. The fluorescence yield of BB3 is temperature-dependent ( $-1.56\% \pm 0.06\%$  per  $^{\circ}\text{C}$ , G. J. Smith, pers. Obs; Kopf and Heinz 1984). As deployed, the MINI<sup>tracka</sup> fluorometer sensor response did not exhibit any significant temperature hysteresis, yielding a BB3 temperature-dependence of  $-1.59\% \pm 0.17\%$  per  $^{\circ}\text{C}$ . All data plotted as mean and standard deviation of both detector response and analyte concentration. Linear regression analysis was restricted to test dye concentrations less than 0.8  $\mu\text{M}$  for all experiments reported. All data plotted as mean and standard deviation of both detector response and analyte concentration.



## Response Precision

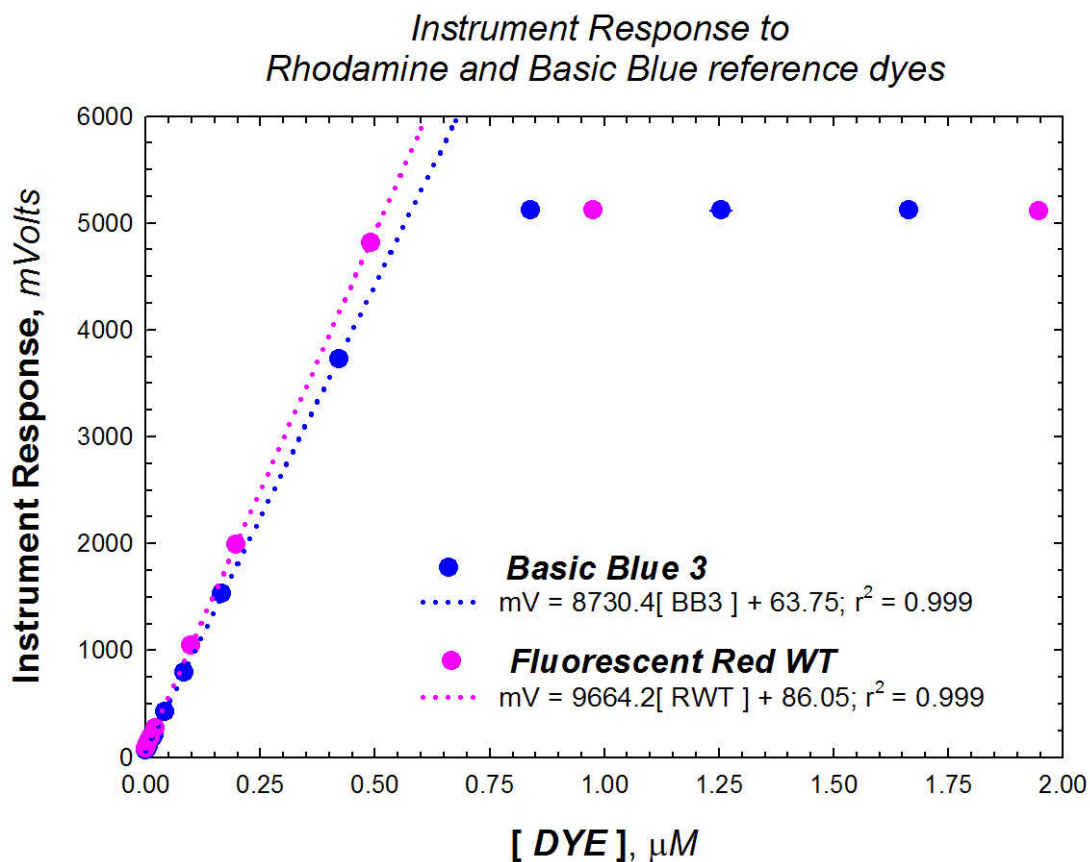
**Figure 2:** Detector noise, here expressed as the mean standard deviation of 10 sequential 1 minute averages of 1 sec samples at fixed temperature and BB3 dye concentrations, exhibited no significant trends with mean detector response below saturation. Over the instrument detection range of 0-0.5  $\mu\text{M}$  BB3, the absolute signal noise was  $\pm 0.75$  (0.46 – 1.77) mV. All data plotted as mean and standard deviation of both detector response and analyte concentration.





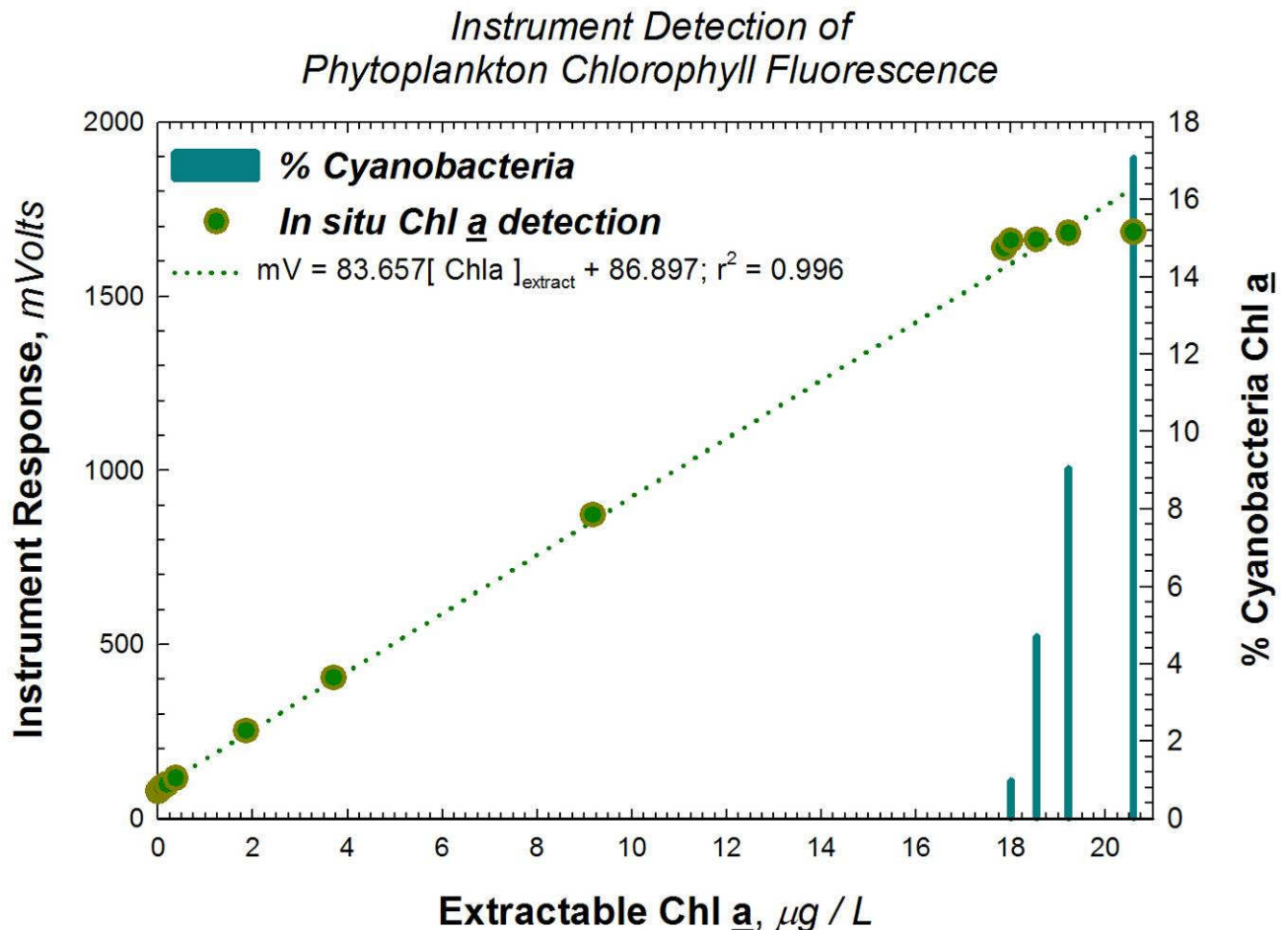
### Response Linearity and Fluorochrome Response

**Figure 3:** The MINI<sup>tracka</sup> fluorometer detector response was linear over comparable concentration ranges of two distinct test fluorochromes BB3 ( $\lambda_{\max}$  654 nm) and Fluorescent Red (Rhodamine) WT ( $\lambda_{\max}$  555 nm). BB3 was detected with approximately 10% lower molar efficiency than RWT. All data plotted as mean and standard deviation of both detector response and analyte concentration.



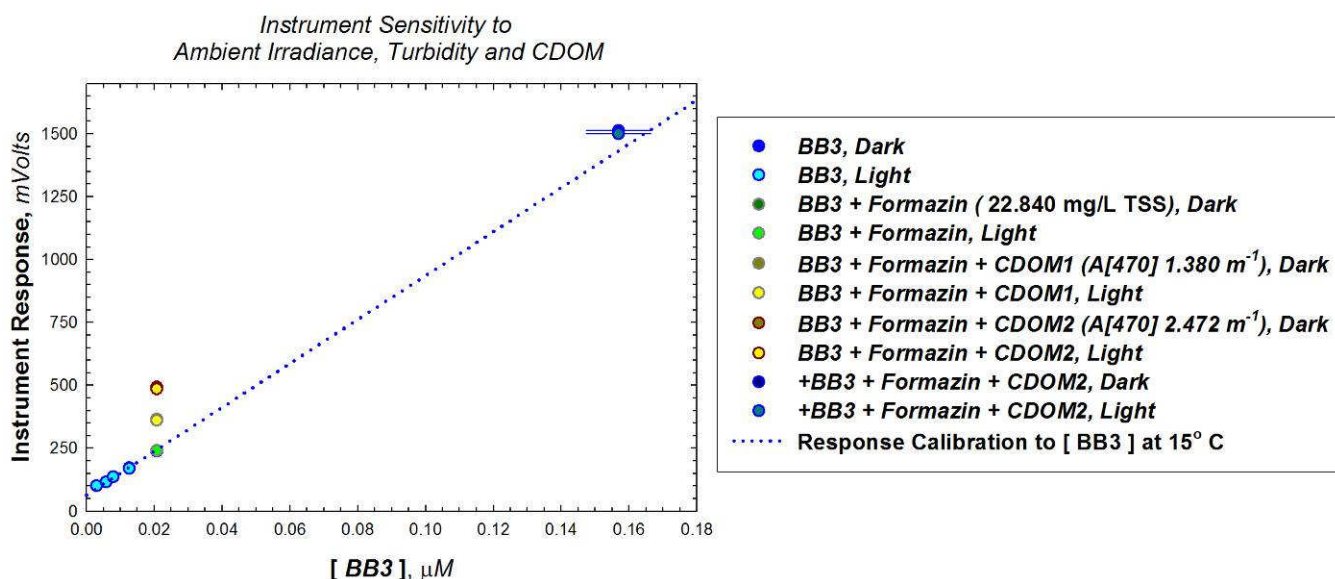
### Response Linearity and Phytoplankton Chlorophyll Fluorescence

**Figure 4:** *Detection of Phytoplankton Chlorophyll Fluorescence.* Instruments were equilibrated f/2-enriched seawater in a temperature controlled tank at 15 °C in darkened conditions. Total chlorophyll *a* concentration in the media was manipulated by adding aliquots of late log-phase cultures ( $276.85 \pm 19.88 \mu\text{g L}^{-1}$  of Chl *a*) of the diatom *Thalassiosira pseudonana* Clone 3H (CCMP 1335) which had been grown in f/2 enriched seawater under constant illumination at 15 °C. Instrument response was linear with total extractable diatom chlorophyll *a* concentrations through  $18 \mu\text{g L}^{-1}$  of Chl *a*. Subsequently, media Chl *a* concentrations were amended by addition of log-phase cultures ( $80.94 \pm 3.79 \mu\text{g L}^{-1}$  of Chl *a*) of the cyanobacterial strain *Synechococcus* sp. CCMP 1282 grown in parallel with the diatom cultures. The instrument did not detect the cyanobacterial packaged chlorophyll *a* with the same efficiency observed for the diatom packaged chlorophyll. Response regressions for diatom additions was:  $\text{mV} = 86.99[\text{Chl } a] + 81.29$ ,  $r^2 = 0.999$ ,  $p < 0.001$  whereas the response to subsequent cyanobacterial additions was ca. 60% lower:  $\text{mV} = 30.48[\text{Chl } a] + 15.15$ ,  $r^2 = 0.956$ ,  $p = 0.004$ . Instrument noise in the background seawater media was  $\pm .53 \text{ mV}$ . No significant instrument response was observed below an added dose of  $0.018 \mu\text{g L}^{-1}$  of Chl *a* consistent with the predicted limit of detection of  $0.015 \mu\text{g L}^{-1}$  of Chl *a*.



### Response Linearity and Sensitivity to ambient turbidity, CDOM and irradiance

**Figure 5:** Instrument response to the test fluorochrome BB3 was assessed in a temperature regulated bath at 15 °C. Instrument detection of added BB3 was in good agreement ( $\pm 5\%$ ) with the prior, independent calibration to BB3 concentration (see Fig. 1). Addition of formazin, as a proxy for turbidity, had no significant effect (ca. 3mV offset) on detector response. In contrast, Coffee extract, used as a proxy for CDOM, induced significant signal enhancement (ca 70%) likely due to organic fluorochromes in this extract. While both proxies of water quality components induced an offset in detector response, this represents a simple shift in instrument baseline that in subsequent additions of the test fluorochrome BB3 produced an incremental detector response lower than the BB3 calibration response (7466.2 mV/  $\mu\text{M}$  BB3 vs 8730.4 mV/  $\mu\text{M}$  BB3), the net effect detector response was a small (<10%) overestimation of predicted performance. Exposure of the tanks to a downwelling surface irradiance of ca. 500  $\mu\text{mol quanta m}^{-2} \text{ s}^{-1}$  PAR (artificial light) induced no significant or consistent change in detector response under the above treatment conditions. All data plotted as mean and standard deviation of both detector response and analyte concentration.



### Laboratory Reliability

There were no issues with this instrument and 100% of the data was recovered from all laboratory experiments. The instrument was set to sample continuously at 1 sec intervals.

**SUMMARY OF VERIFICATION RESULTS, FIELD MOORED TESTS:****Field Conditions****TABLE 1.** Lists the field conditions during the mooring testing (fw = freshwater).

<b>SITES</b>		<b>Temperature °C</b>	<b>Salinity PSU</b>	<b>TSS mg.l<sup>-1</sup></b>	<b>CDOM A [470 nm], m<sup>-1</sup></b>
<b>Chesapeake Bay</b>	Minimum	25.68	12.86	0.88	0.37
	Maximum	30.08	14.94	18.53	0.93
	Average	27.59	14.13	6.74	0.56
	STDev	1.00	0.38	3.32	0.13
<b>Lake Michigan</b>	Minimum	14.02	fw	0.94	0.47
	Maximum	26.56	fw	14.71	0.94
	Average	20.17	fw	2.21	0.68
	STDev	2.08	fw	1.79	0.11
<b>Hawaii</b>	Minimum	26.22	34.64	3.60	0.05
	Maximum	28.72	35.43	38.00	0.34
	Average	27.49	35.29	8.50	0.18
	STDev	0.51	0.08	6.60	0.05
<b>Gulf of Maine</b>	Minimum	14.37	28.61	2.58	0.18
	Maximum	22.78	31.02	11.48	0.54
	Average	16.61	30.59	5.03	0.34
	STDev	0.95	0.21	1.80	0.09
<b>Moss Landing</b>	Minimum	10.6	31.34	8.98	0.08
	Maximum	19.42	33.29	34.08	0.93
	Average	14.67	32.73	19.41	0.33
	STDev	1.59	0.29	5.22	0.12
<b>Skidaway Island</b>	Minimum	26.28	12.31	9.30	0.69
	Maximum	31.35	24.43	54.86	1.22
	Average	28.68	18.28	20.07	0.96
	STDev	1.09	2.03	8.79	0.15
<b>Tampa Bay</b>	Minimum	26.21	6.15	0.16	0.45
	Maximum	31.42	27.25	34.85	1.48
	Average	29.51	25.64	7.23	0.76
	STDev	0.93	1.90	6.12	0.18

## Field Moored Tests

### *Field Performance:*

Figures, 6A, 7A, 8A, 9A, 10A, 11A and 12A on the following pages display chlorophyll *a* concentrations in RFU (green line) measured by the instrument through time (month/day on x axis) with the corresponding mean chlorophyll *a* concentrations from extractive HPLC analysis (yellow dots in  $\mu\text{g L}^{-1}$ ,  $n = 3$ , standard deviation is plotted although values are smaller than symbols used in graphs) taken periodically during the four-week field deployments.

### *Field Ancillary Data:*

Figure, 6B, 7B, 8B, 9B, 10B, 11B and 12B display the total suspended solid (grey squares, TSS in  $\text{mg L}^{-1}$ ) measured by weight and the colored dissolved organic matter (CDOM) estimated by spectrophotometric analysis (purple triangles, absorption coefficient at 470 nm) both derived from samples taken periodically during the four-week field deployments.

### *Field Ancillary Data:*

Figure 6C, 7C, 8C, 9C, 10C, 11C and 12C shows the corresponding temperature (degree Celsius) and salinity (PSU) at field site during deployments.

Figure 6D, 7D, 8D, 9D, 10D, 11D and 12D features the Photosynthetically Active Radiation (PAR in  $\text{mMol s}^{-1} \text{m}^{-2}$ ) at field site during deployments.

### *Pre and Post-deployment tests:*

Table 2, 3, 4, 5, 6, 7 and 8. Instrument responses to blank (DI water) and dyes (BB3, RHOD) before deployment (PRE) and after deployment (POST). The instrument response to blank and dyes after the deployment was tested in two stages, pre-cleaning with the biofouling remaining on the instrument and post-cleaning with the biofouling removed. Please use caution when interpreting these results. While each test site attempted to remove all material that may influence fluorometer performance for the post-cleaning blank and dye readings, we can not guarantee that the instruments were restored completely to the pre-deployment state.

**Figure 6: Field Performance – Patuxent River, Chesapeake Bay, Maryland (estuary)**

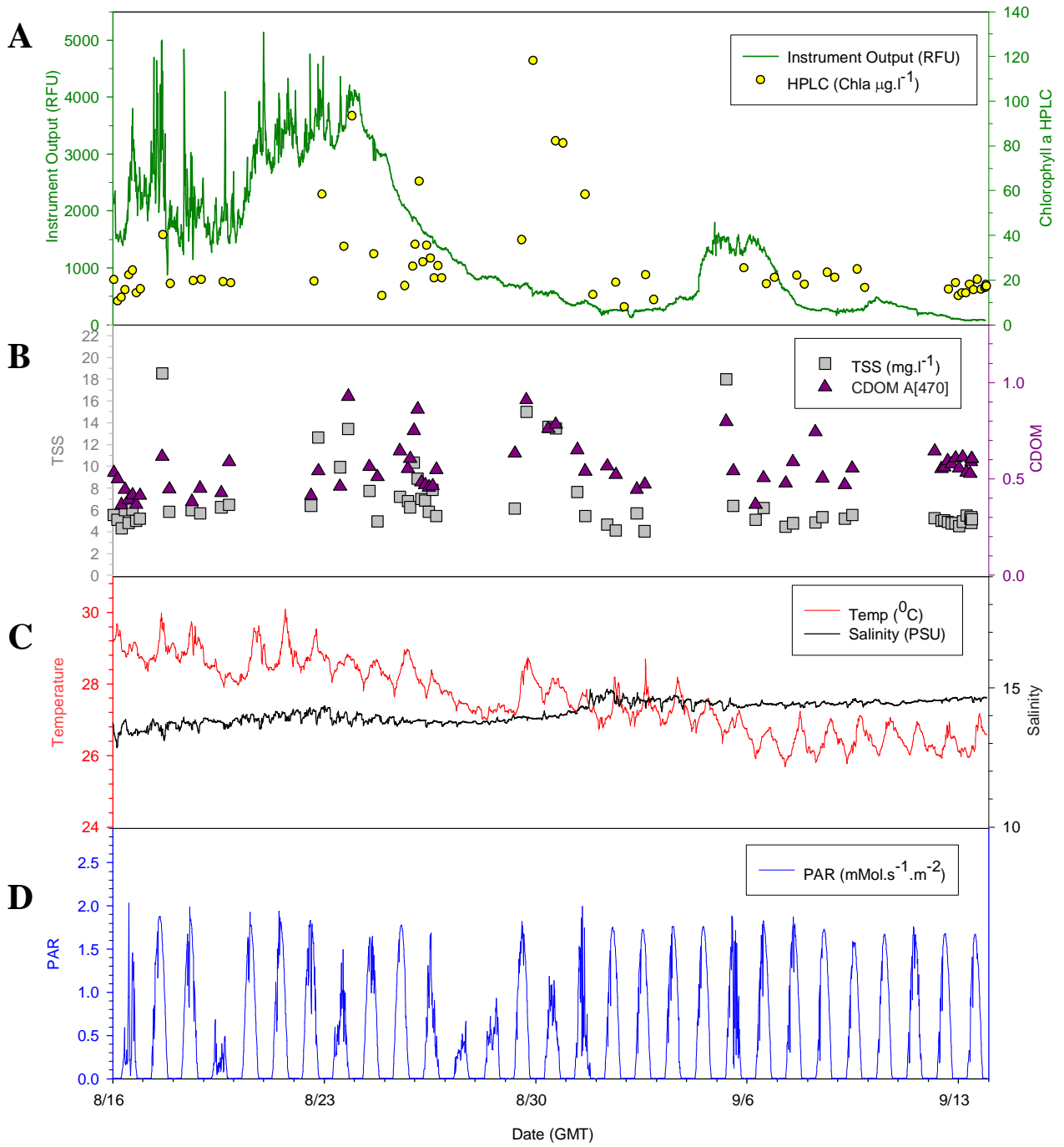


TABLE 2

	PRE		POST pre-cleaning		POST post-cleaning	
	Mean (RFU)	STD $\pm$	Mean (RFU)	STD $\pm$	Mean (RFU)	STD $\pm$
<b>Blk/DI</b>	73.54	1.17	80.52	1.11	557.98	21.99
<b>BB3</b>	2337.00	302.67	78.40	0.61	2014.83	67.56
<b>Rhod</b>	5139.57	1.47	78.50	0.17	3224.03	7.11

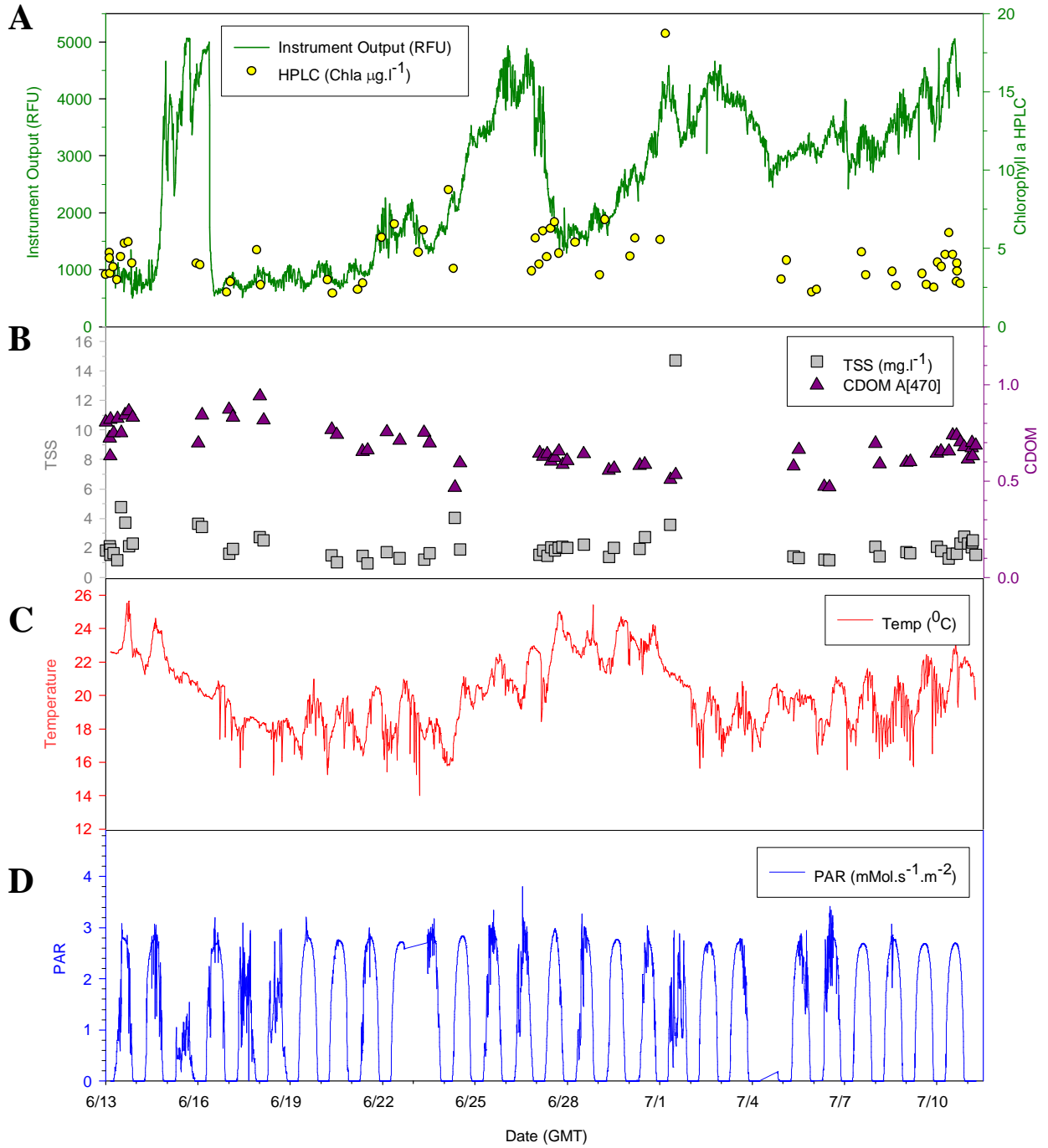


Sensor before the four weeks deployment.



Sensor after the four weeks deployment.

**Figure 7: Field Performance – Muskegon, Lake Michigan (freshwater)**





**TABLE 3**

Note: Missing values due to a problem with pre-deployment standard solutions, not an instrument malfunction.

n/a= non available since it was possible to take only one sample for the PRE and POST dye tests, not an instrument malfunction.

	PRE		POST pre-cleaning		POST post-cleaning	
	Mean (RFU)	STD $\pm$	Mean (RFU)	STD $\pm$	Mean (RFU)	STD $\pm$
<b>Blk/DI</b>			5058.97	n/a	3673.02	n/a
<b>BB3</b>			5060.72	n/a	4845.25	n/a
<b>Rhod</b>			4977.88	n/a	5062.57	n/a



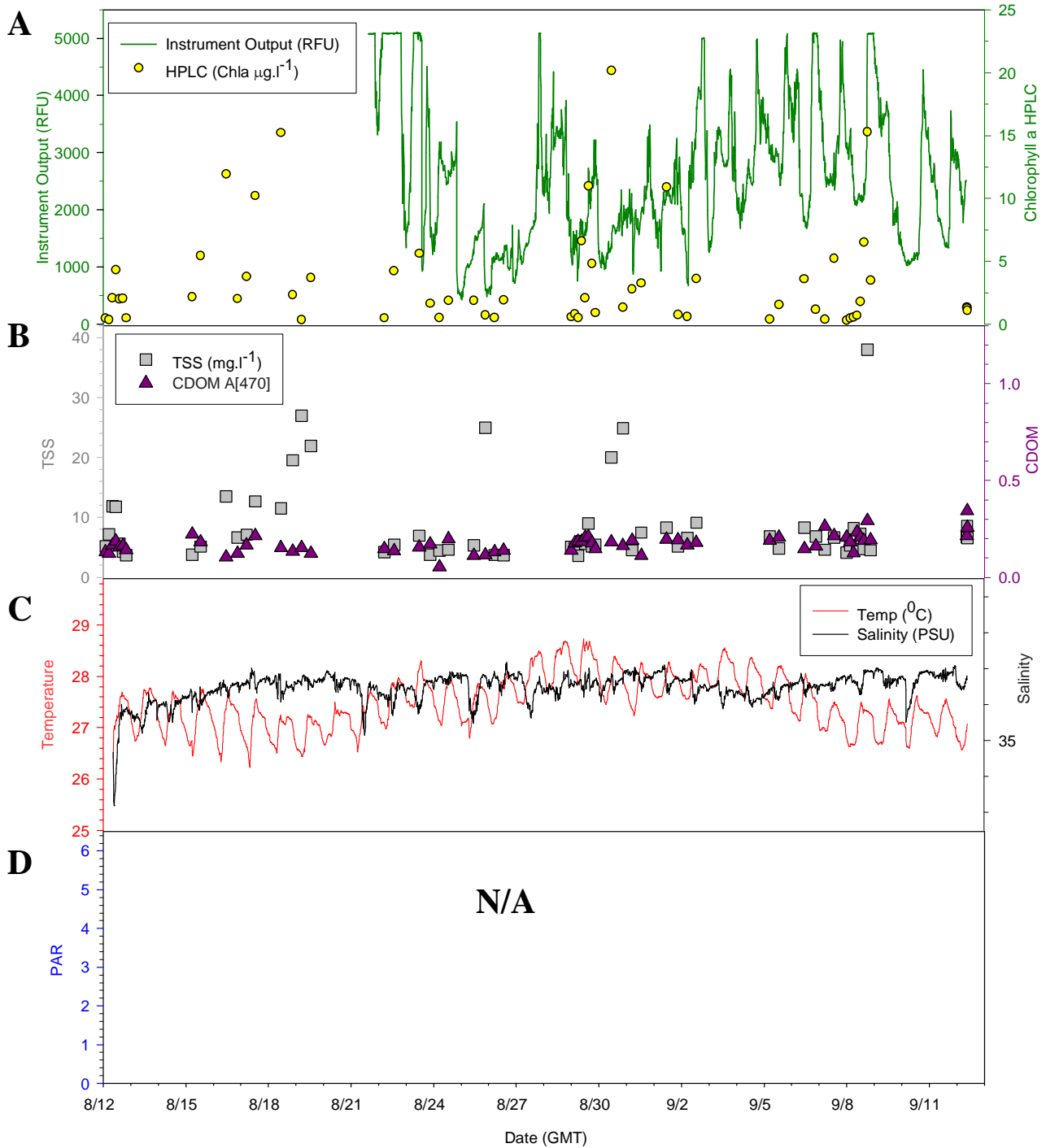
Sensor before the four weeks deployment.



Sensor after the four weeks deployment.

**Figure 8: Field Performance – Coconut Island, Hawaii (coral reef)**

Note: The missing instrument and PAR data were due to data loss following a malfunction of the ACT datalogger.



**TABLE 4**

Note: The missing data were due to data loss following a malfunction of the ACT datalogger.  
n/a= non available due to biofouling, not an instrument malfunction.

	PRE		POST pre-cleaning		POST post-cleaning	
	Mean (RFU)	STD $\pm$	Mean (RFU)	STD $\pm$	Mean (RFU)	STD $\pm$
<b>Blk/DI</b>			2378.14	124.32	879.49	17.58
<b>BB3</b>			n/a	n/a	2003.63	100.71
<b>Rhod</b>			n/a	n/a	1608.01	18.17



Sensor before the four weeks deployment.



Sensor after the four weeks deployment.

**Figure 9: Field Performance – Damariscotta River Estuary, Gulf of Maine (tidal embayment)**

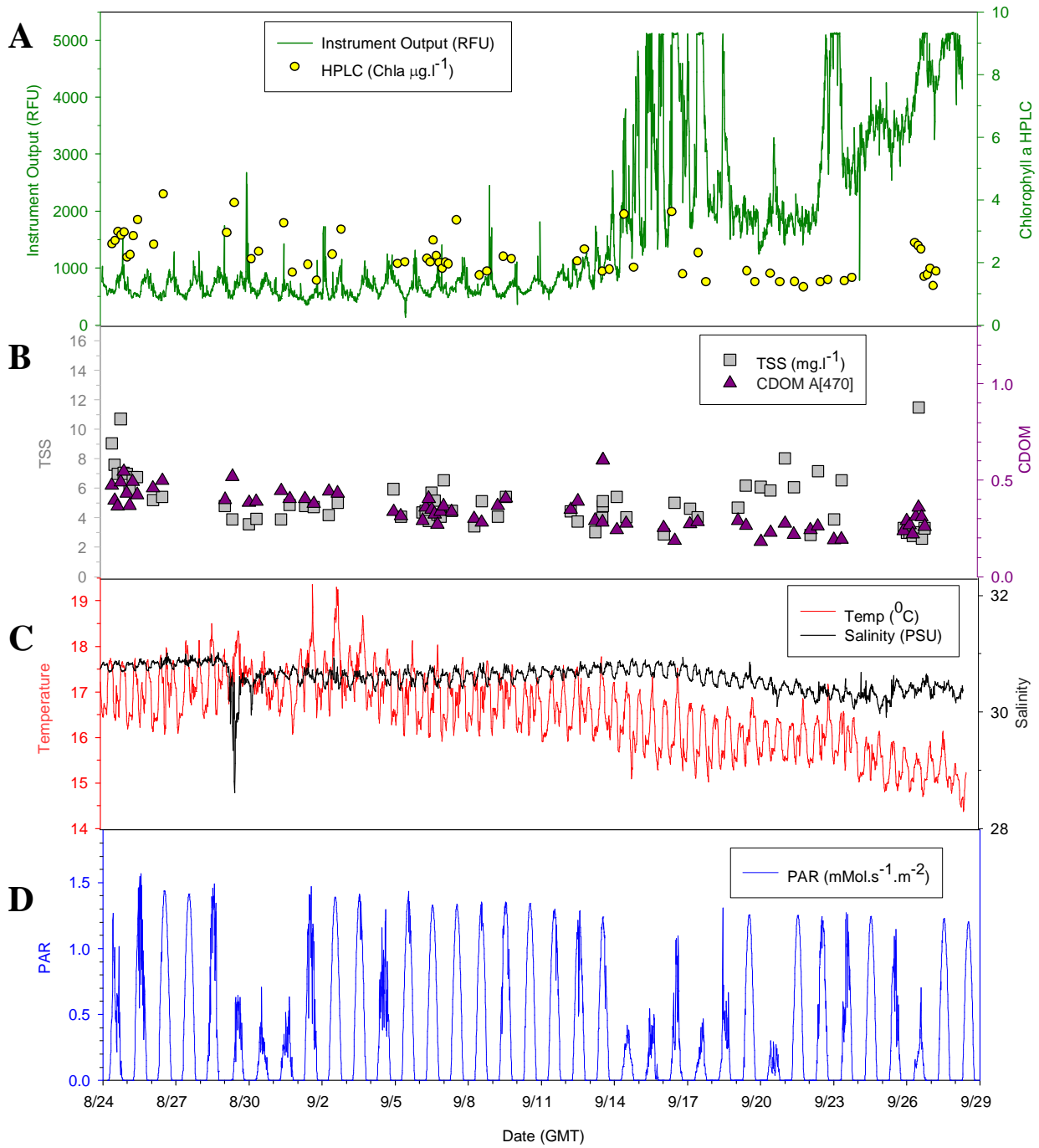


TABLE 5

	PRE		POST pre-cleaning		POST post-cleaning	
	Mean (RFU)	STD $\pm$	Mean (RFU)	STD $\pm$	Mean (RFU)	STD $\pm$
<b>Blk/DI</b>	82.01	1.43	5114.72	1.07	1071.15	25.13
<b>BB3</b>	2709.85	54.27	5031.64	125.07	3105.06	25.13
<b>Rhod</b>	4211.59	26.74	5115.23	1.18	4144.72	8.40

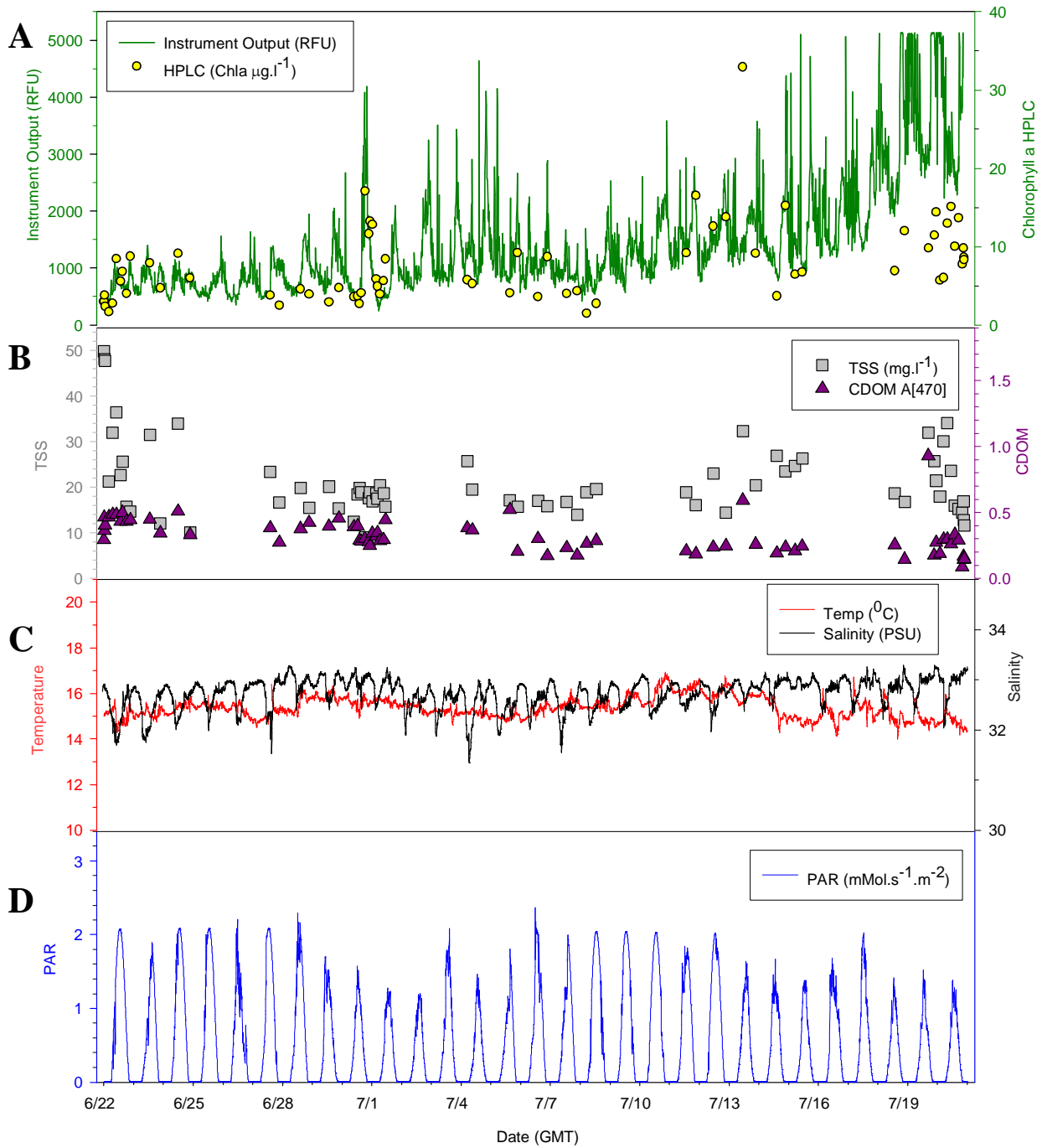


Sensor before the four weeks deployment.



Sensor after the four weeks deployment.

**Figure 10: Field Performance – Moss Landing, California (estuary)**



**TABLE 6**

n/a= non available due to biofouling, not an instrument malfunction.

	PRE		POST pre-cleaning		POST post-cleaning	
	Mean (RFU)	STD $\pm$	Mean (RFU)	STD $\pm$	Mean (RFU)	STD $\pm$
<b>Blk/DI</b>	69.69	0.95	2755.63	458.38	88.39	2.59
<b>BB3</b>	3082.20	20.58	n/a	n/a	5142.83	4.55
<b>Rhod</b>	4614.83	17.26	n/a	n/a	1167.43	27.75



Sensor before the four weeks deployment.



Sensor after the four weeks deployment.

**Figure 11: Field Performance – Skidaway Island, Georgia (estuary)**

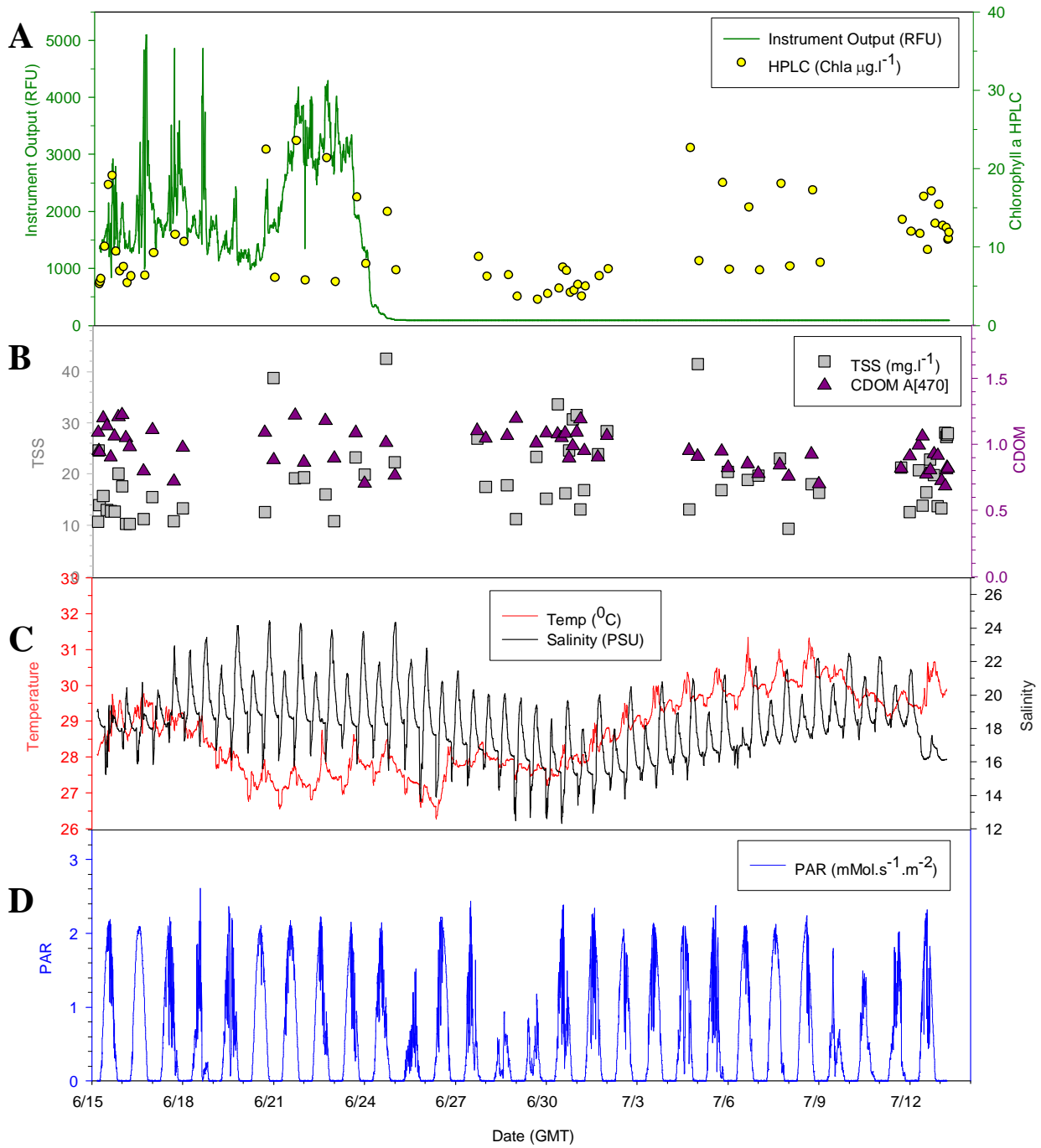




TABLE 7

	PRE		POST pre-cleaning		POST post-cleaning	
	Mean (RFU)	STD $\pm$	Mean (RFU)	STD $\pm$	Mean (RFU)	STD $\pm$
<b>Blk/DI</b>	95.81	0.33	92.8	0.30	151.00	0.93
<b>BB3</b>	2231.12	103.30	93.20	0.08	238.48	4.11
<b>Rhod</b>	3307.52	79.27	93.20	0.20	243.15	3.94



Sensor before the four weeks deployment.



Sensor after the four weeks deployment.

**Figure 12: Field Performance – Bayboro Harbor, Tampa Bay, Florida (estuary)**

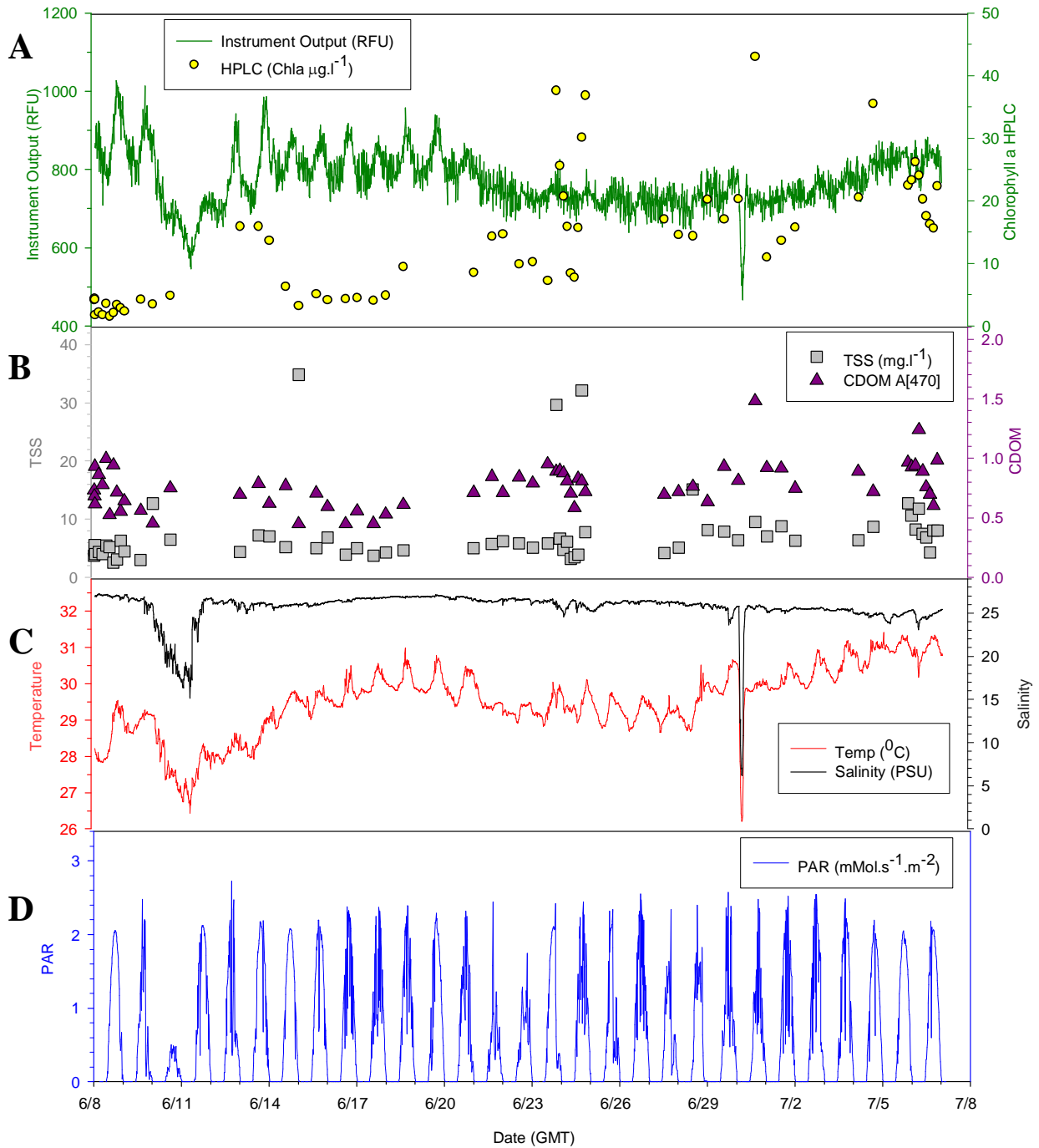


TABLE 8

	PRE		POST pre-cleaning		POST post-cleaning	
	Mean (RFU)	STD $\pm$	Mean (RFU)	STD $\pm$	Mean (RFU)	STD $\pm$
<b>Blk/DI</b>	66.40	0.13	157.20	4.43	145.28	0.23
<b>BB3</b>	3238.61	12.88	160.10	2.57	153.28	0.23
<b>Rhod</b>	89.80	2.27	159.43	1.05	239.33	10.85



Sensor before the four weeks deployment.



Sensor after the four weeks deployment.

### **Moored Reliability**

There were no major issues with this instrument and, for most of the site, 100% of the data was recovered from the field deployment. At the Hawaii site, the missing data for the first 10 days were due to an external malfunction of one of the ACT datalogger and not any instrument malfunction.

**SUMMARY OF VERIFICATION RESULTS, FIELD PROFILING TESTS:**

*Figures 13A, 14A and 15A, display depth profiles of chlorophyll *a* concentrations in RFU (green line) measured during the up-cast by the instrument with the corresponding chlorophyll *a* concentrations from extractive HPLC analysis (yellow dots in  $\mu\text{g L}^{-1}$ ,  $n = 3$ , standard deviation is plotted although values are smaller than symbols used in graphs) taken at 6 discrete depth throughout the water column during the up-cast.*

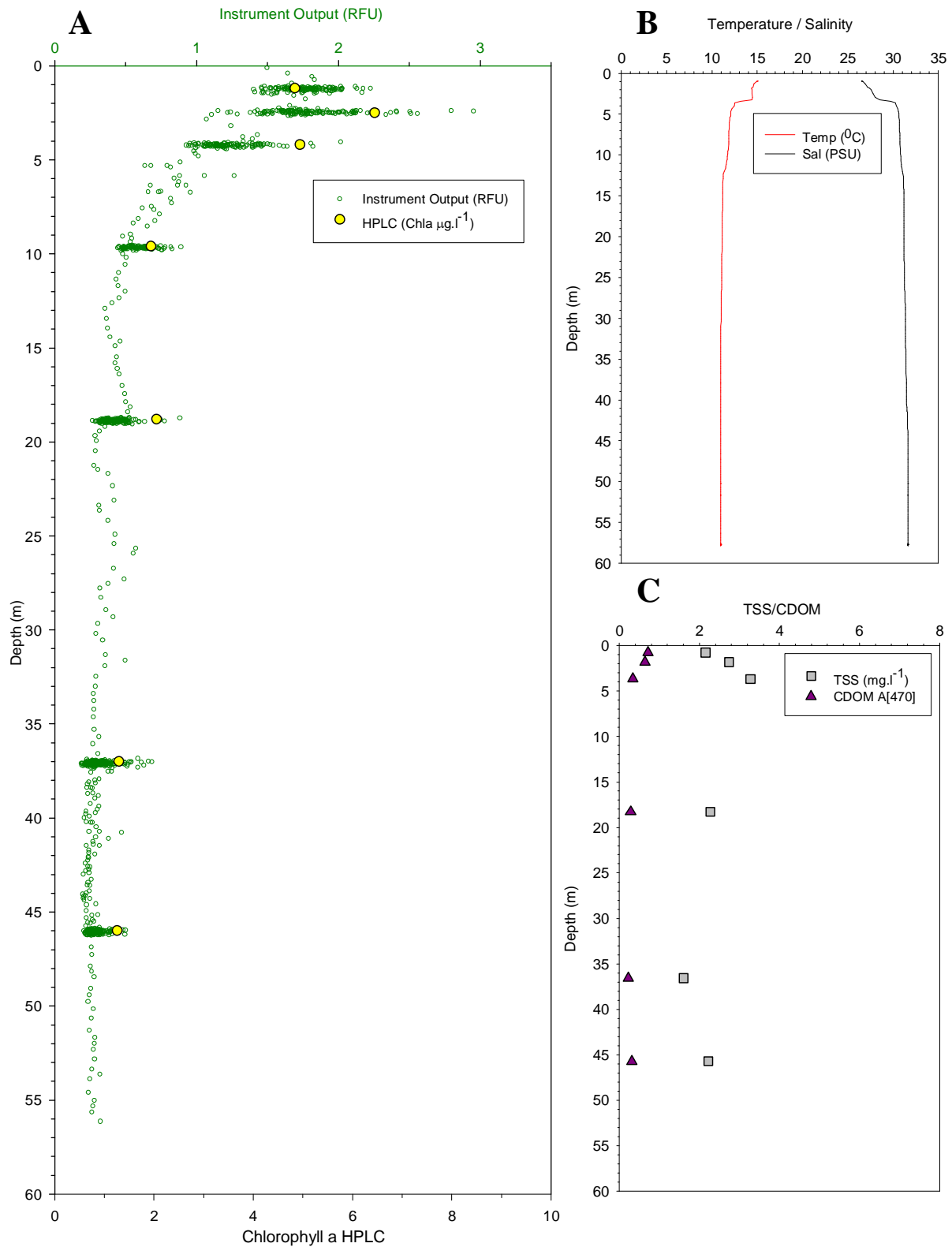
*Figures 13C, 14C and 15C display the total suspended solid (grey squares, TSS in  $\text{mg L}^{-1}$ ) measured by weight and the colored dissolved organic matter (CDOM) estimated by spectrophotometric analysis (purple triangles, absorption coefficient at 470 nm) both derived from samples taken at 6 discrete depth throughout the water column during the up-cast.*

*Figures 16A, 17A and 18A, display depth profiles of chlorophyll *a* concentrations in RFU (green line) measured during the down-cast by the instrument with the corresponding chlorophyll *a* concentrations from extractive HPLC analysis (yellow dots in  $\mu\text{g L}^{-1}$ ,  $n = 3$ , standard deviation is plotted although values are smaller than symbols used in graphs) taken at 6 discrete depth throughout the water column during the down-cast.*

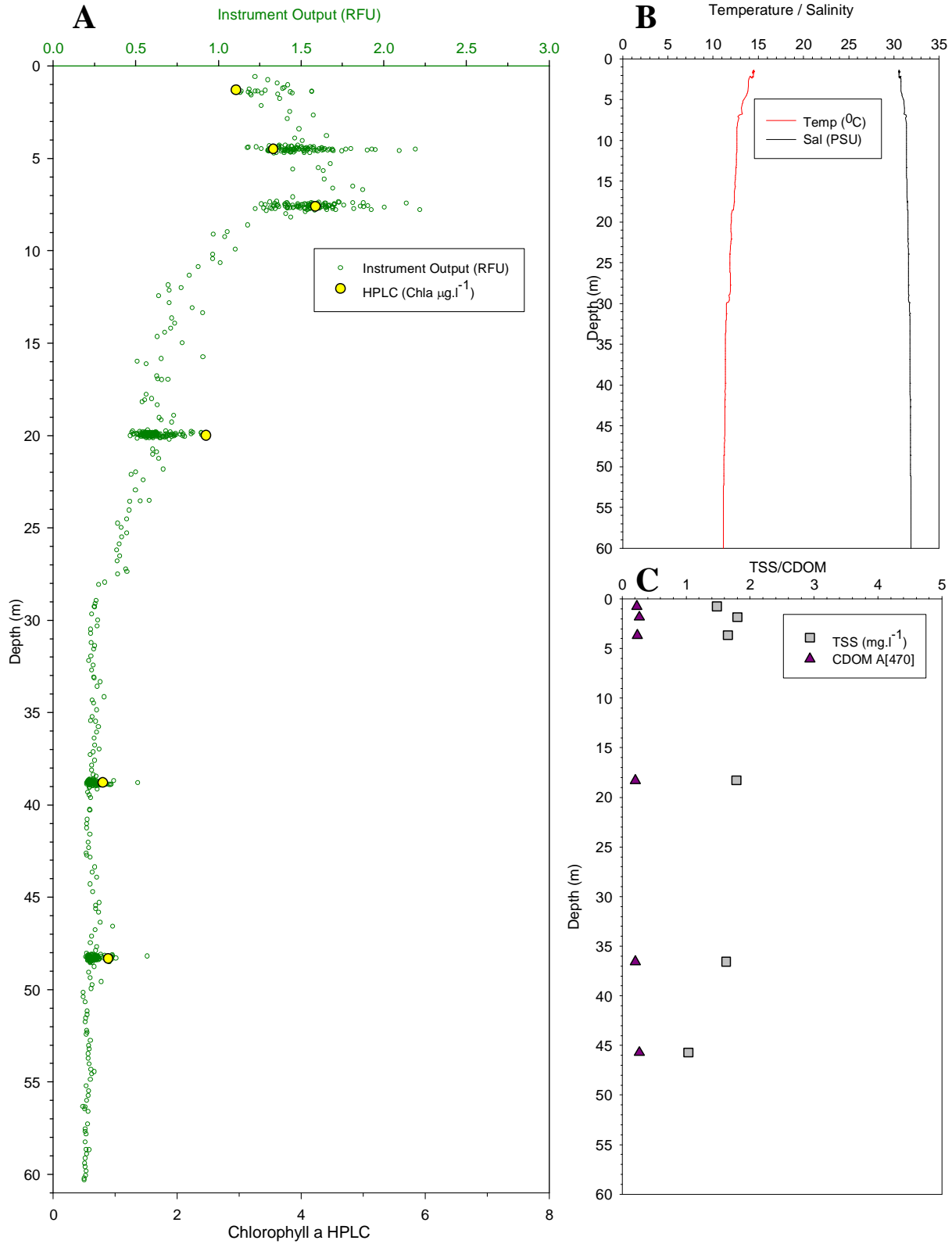
*Figures 16C, 17C and 18C display the total suspended solid (grey squares, TSS in  $\text{mg L}^{-1}$ ) measured by weight and the colored dissolved organic matter (CDOM) estimated by spectrophotometric analysis (purple triangles absorption coefficient at 470 nm) both derived from samples taken at 6 discrete depth throughout the water column during the down-cast.*

*Figures 13B, 14B, 15B 16B, 17B, 18B display shows the corresponding temperature (degree Celsius) salinity (PSU when available) the Photosynthetically Active Radiation (PAR in  $\text{mMol s}^{-1} \text{m}^{-2}$  when available) throughout the water column during the down-cast.*

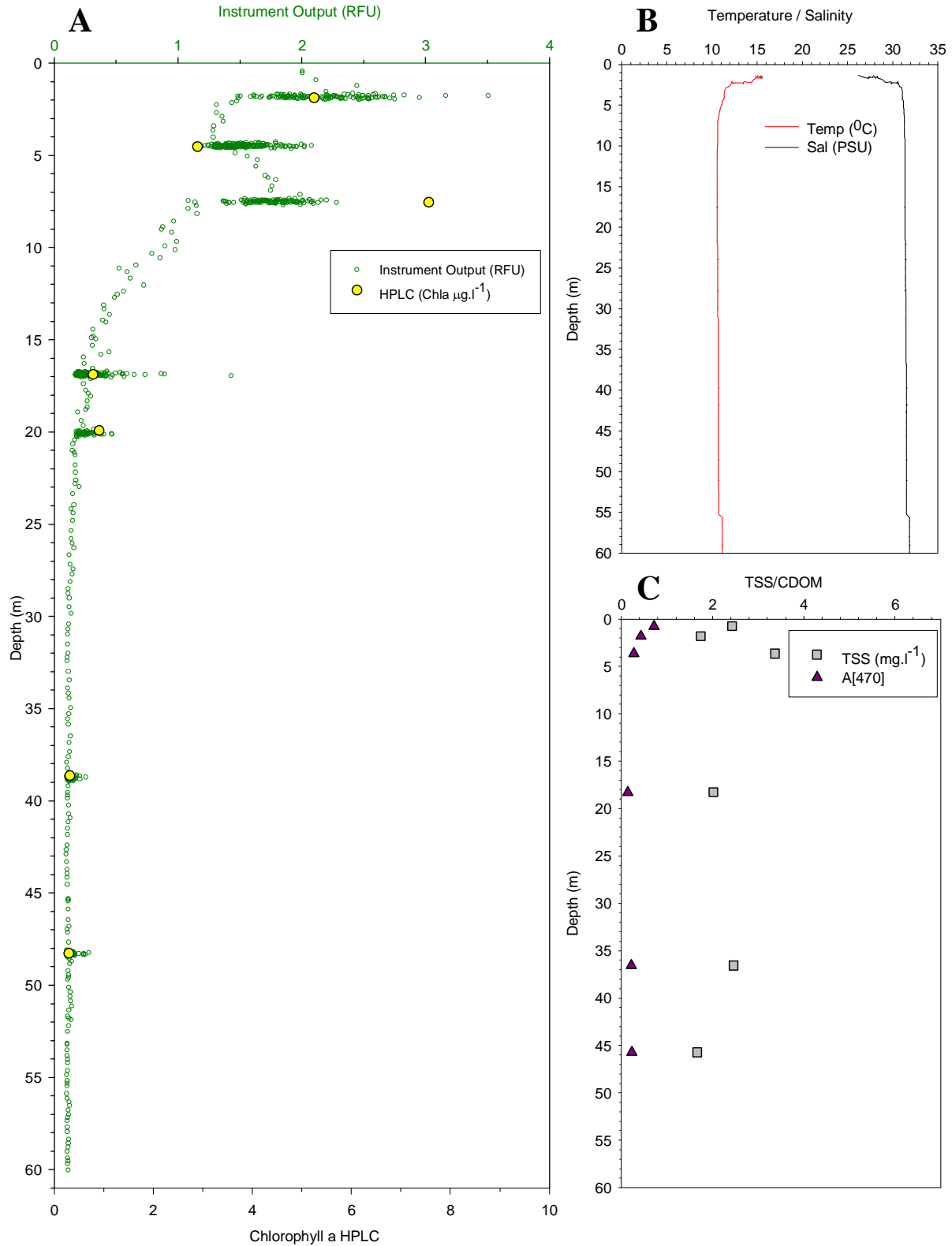
**Figure 13: MAINE Profile 1 - Position: Penobscot Bay, Upper Bay near Castine, 44 21.258, Lon: 68 50.062. Start Down ~ 17:58:00 EST**



**Figure 14: MAINE Profile 2 - Penobscot Bay, Bay Mouth Channel, Lat: 44 06.395, Lon: 68 59.447**  
 Start Down ~ 21:15:49 EST



**Figure 15: MAINE Profile 3 - Position: Penobscot Bay, Southern Passage, Lat: 44 19.850, Lon: 68 56.322. Start Down ~ 00:47:15 EST**

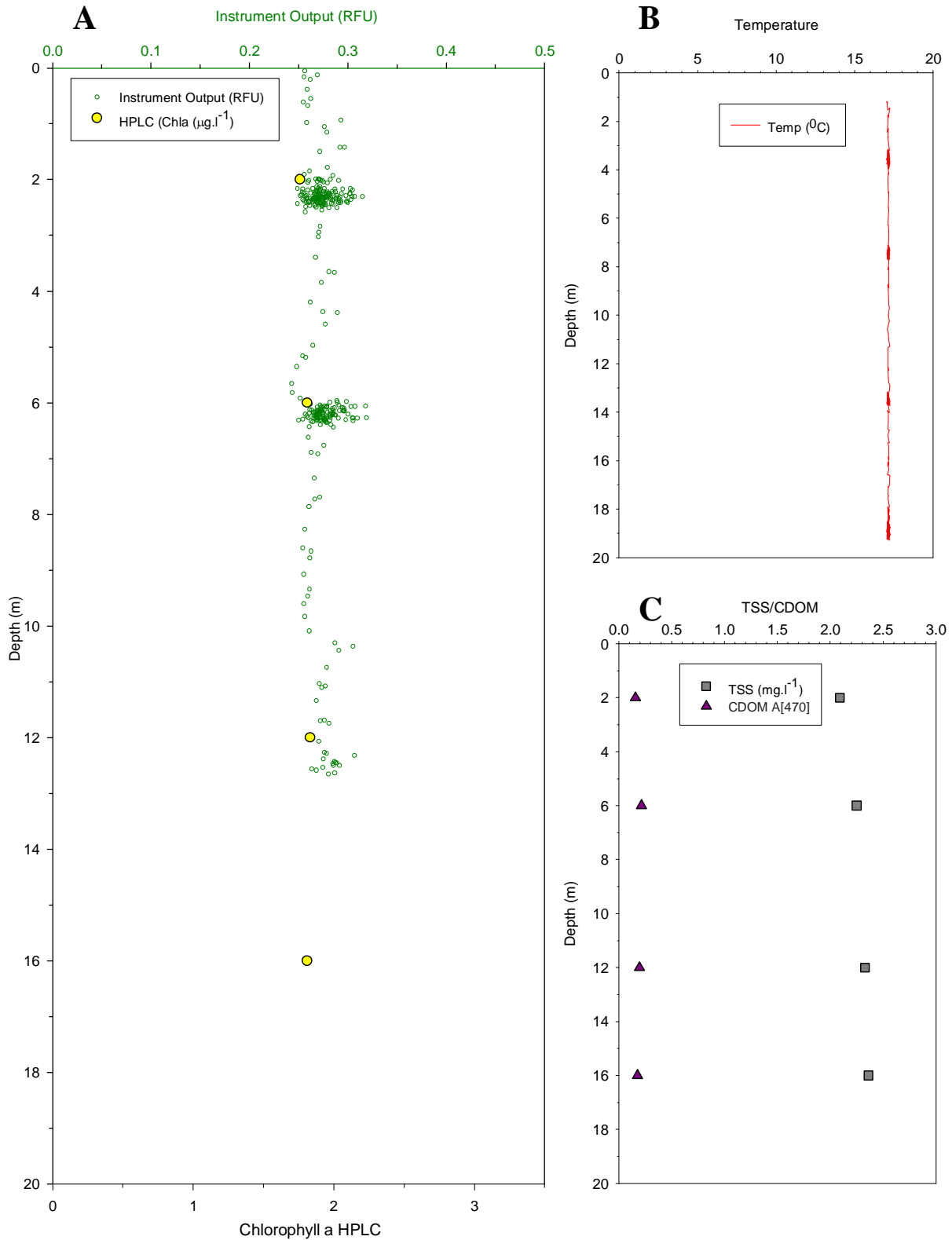




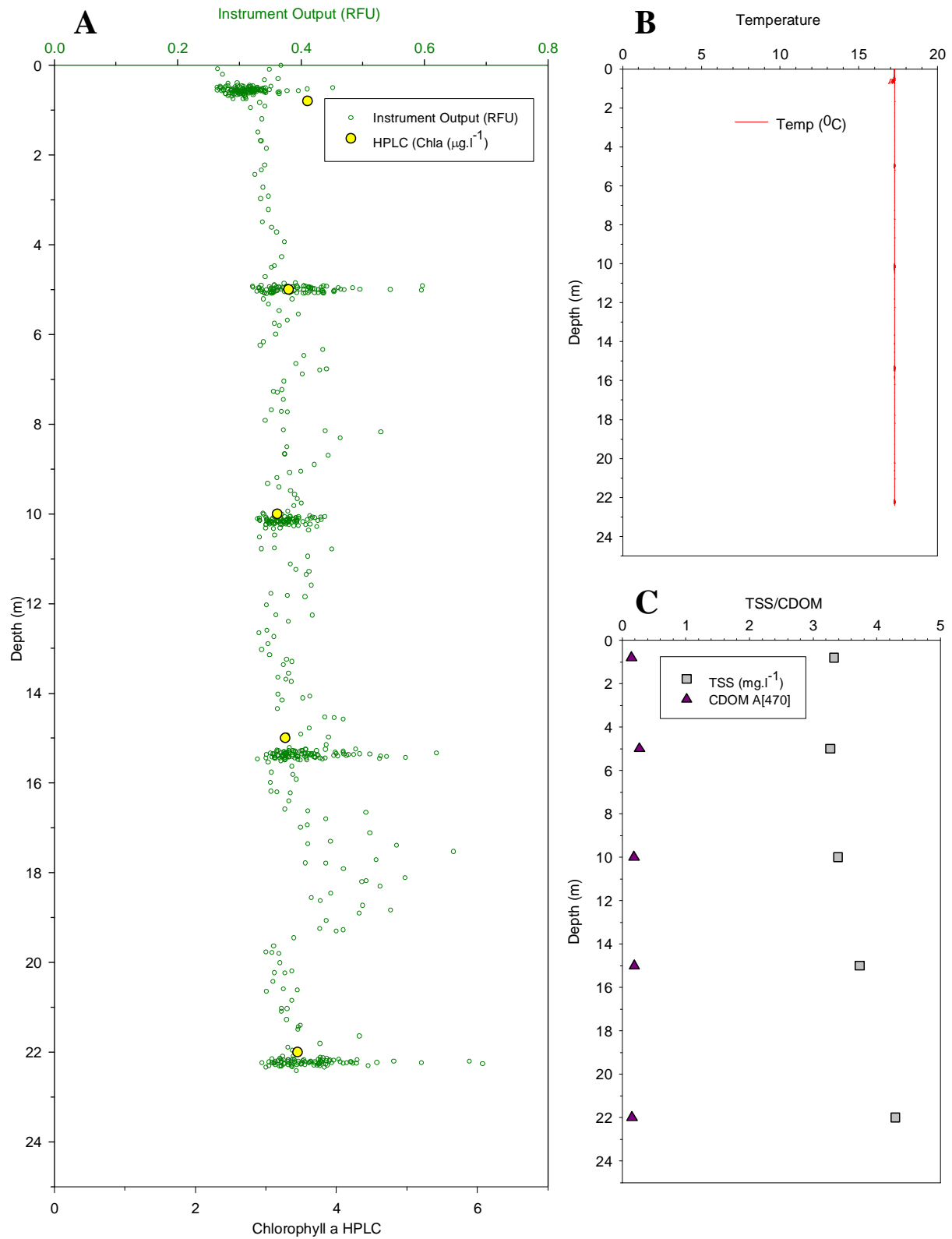
**Figure 16: Michigan Profile 1 – Lake Michigan**

Start Down ~ 7:00:00 EST

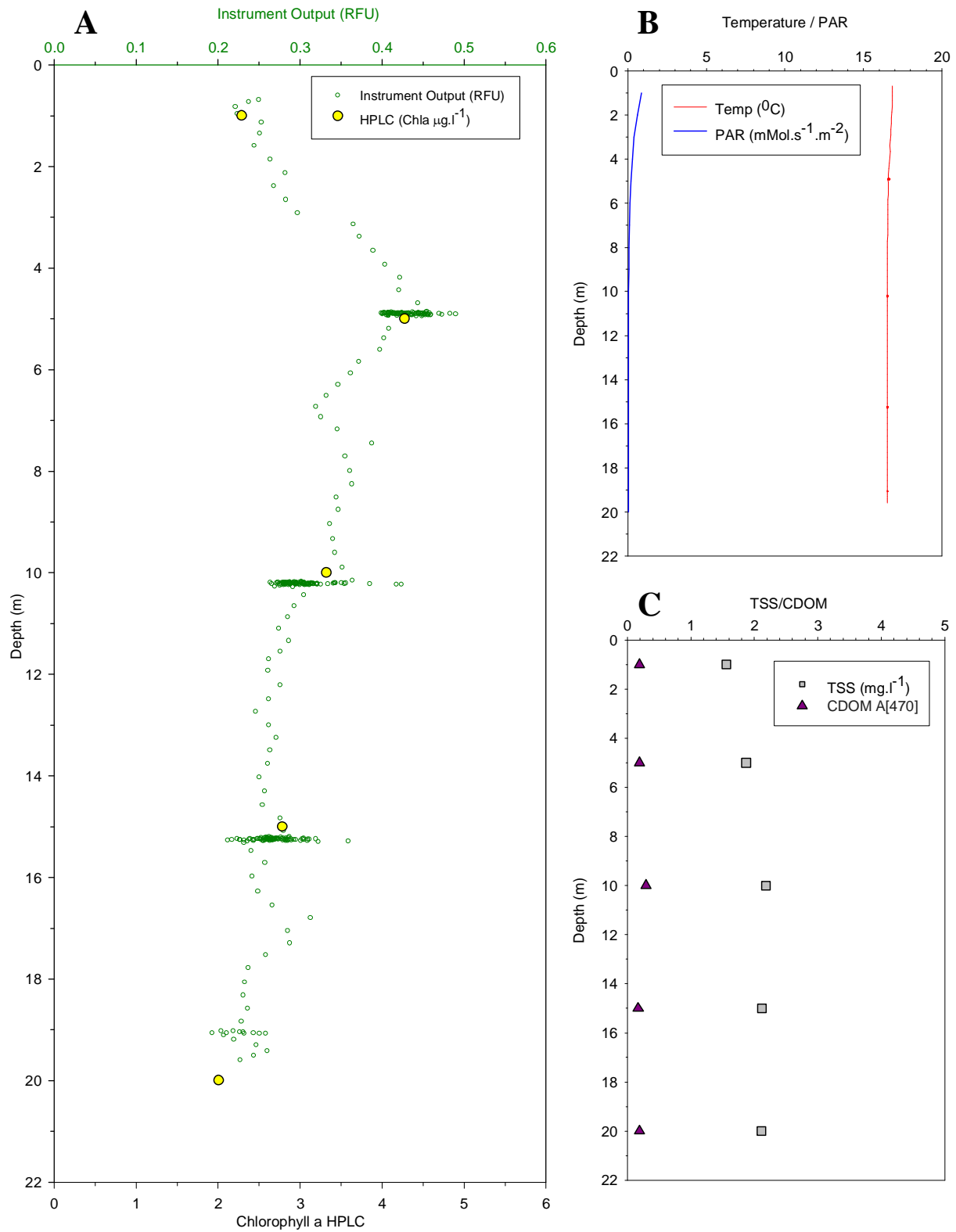
Note: missing instrument data due to the ACT datalogger malfunction



**Figure 17: Michigan Profile 2 - Lake Michigan**  
 Start Down ~ 9:10:04 EST



**Figure 18: Michigan Profile 3 - Lake Michigan**  
 Start Down ~ 17:27:49 EST



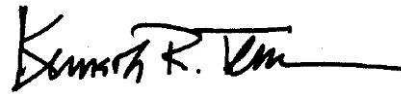
**ACKNOWLEDGMENTS:**

We wish to acknowledge the support of all those who helped plan and conduct the verification test, analyze the data, and prepare this report. In particular we would like to thank our Technical Advisory Committee, J. Cullen, Z. Kolber, S. McLean, H. MacIntyre, J. Newton, P. Pennington, M.J. Perry, C. Roesler, and N. Welschmeyer for their advice and direct participation in various aspects of this evaluation. E. Buckley also provided critical input on all aspects of this work and served as the independent Quality Assurance Manager. This work has been coordinated with, and funded by, the National Oceanic and Atmospheric Administration, Coastal Services Center, Charleston, SC.

April 24, 2006

---

Date




---

Approved By: **Dr. Kenneth Tenore**  
ACT Director

April 24, 2006

---

Date



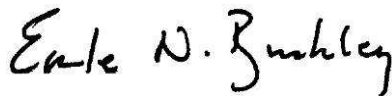

---

Approved By: **Dr. Mario Tamburri**  
ACT Chief Scientist

April 24, 2006

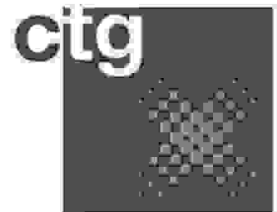
---

Date




---

Approved By: **Dr. Earle Buckley**  
Quality Assurance Supervisor



Dr Mario Tamburri  
Chief Scientist  
Alliance for Coastal Technologies  
c/o UMCES Chesapeake Biological Laboratory  
PO Box 38  
Solomons  
Maryland  
20688  
USA

**Chelsea  
Technologies  
Group**

55 Central Avenue  
West Molesey  
Surrey KT8 2QZ  
United Kingdom  
Tel: +44 (0)20 8481 9000  
Fax: +44 (0)20 8941 9319  
sales@chelsea.co.uk  
www.chelsea.co.uk

8 May 2006

Dear Mario

**FLUORIMETER EVALUATION**

The Chelsea Technologies Group was pleased to participate in the recent fluorimeter evaluation with our Aquatracka III and Minitracka II instruments.

The evaluations were conducted in a very rigorous manner and in a diverse range of environments. We are pleased with the positive performance of our instruments under these environments and the results are very constructive.

The ACT evaluation programme is extremely valuable for both users and manufacturers and we look forward to supporting the programme in the future.

Yours sincerely

Richard Burt  
Marketing Director

**Group Companies**

Chelsea Technologies Ltd  
Chelsea Instruments Ltd  
Chelsea Environmental Ltd  
Marine Acoustics Ltd



Registered at the above address